

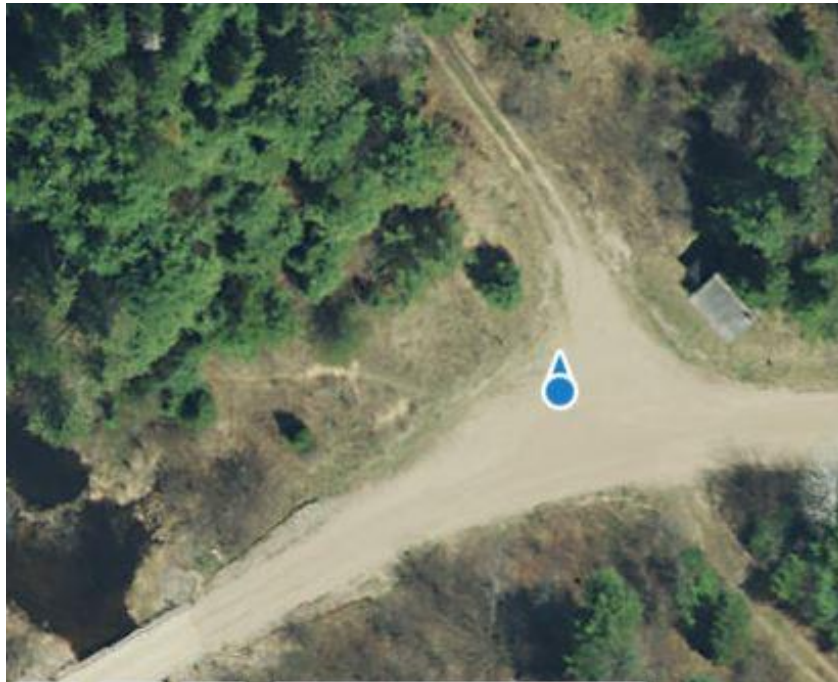
# Day Hike To Basin, Turcotte and Guthrie Lakes

by Jim R.  
April 20, 2022



Basin Lake

This hike took place not long after ice off in the spring of 2022. The trek would take us along Basin Lake and to Turcotte and Guthrie Lakes. The starting point was Basin Depot, located 5 km from the Basin Lake access point.



Basin Depot

Starting Point – Basin Depot. The Friends of Bonnechere Parks website notes that “As early as 1852, several roads radiated from here to logging camps on the Madawaska River, the Petawawa and the Barron.”

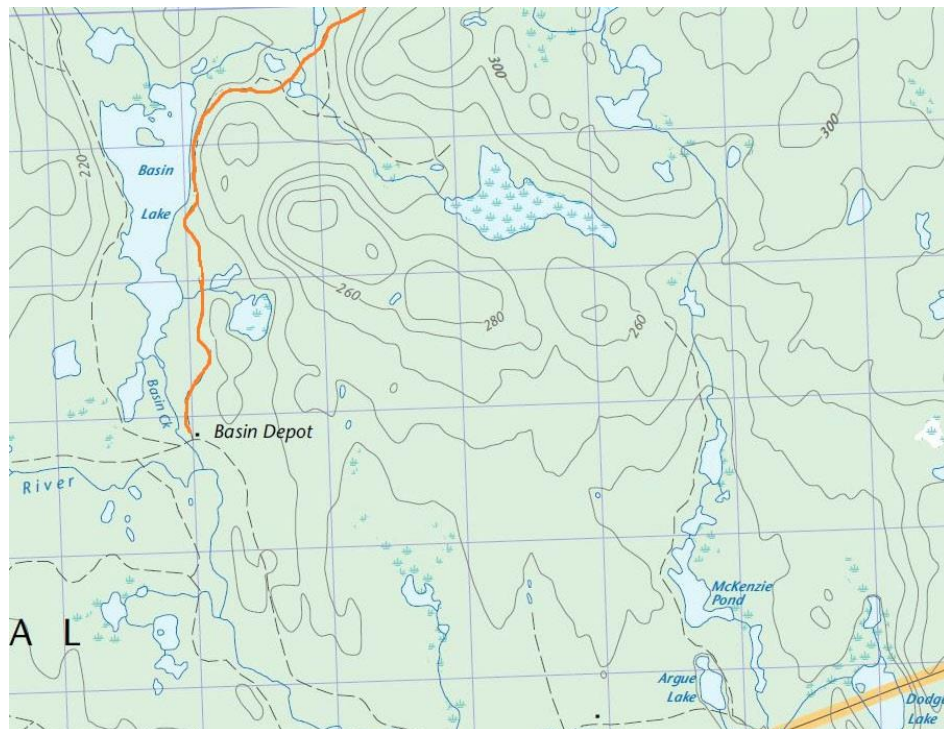
The building in the photo below dates from 1892. A log structure, it is the oldest building in Algonquin Park, and served as an office, harness shop, school house and, at one time, a hospital. The Park was expanded in 1914 to take in the eastern region including Basin Depot.

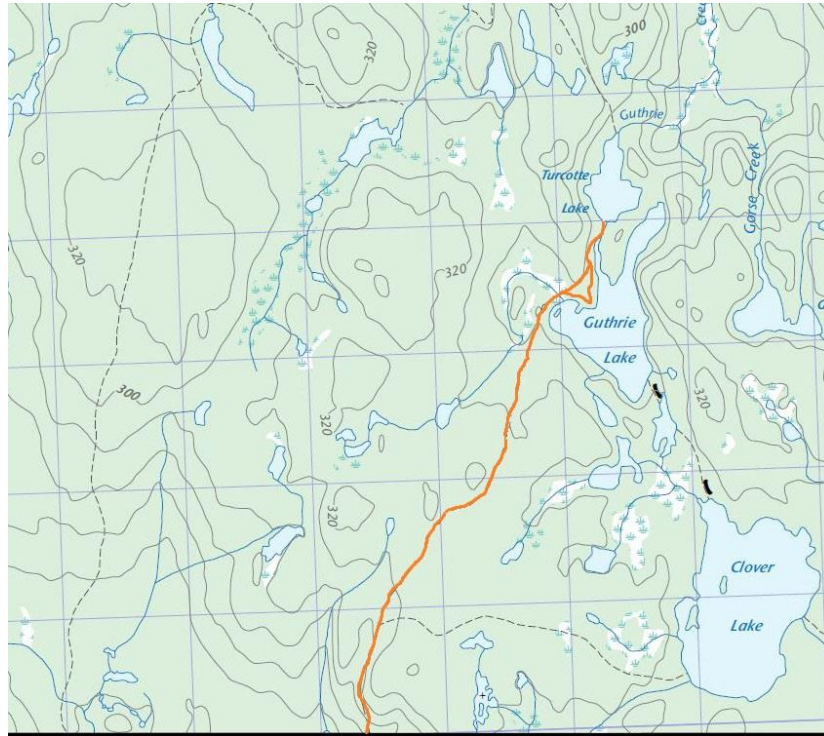


Campsite on Basin Lake

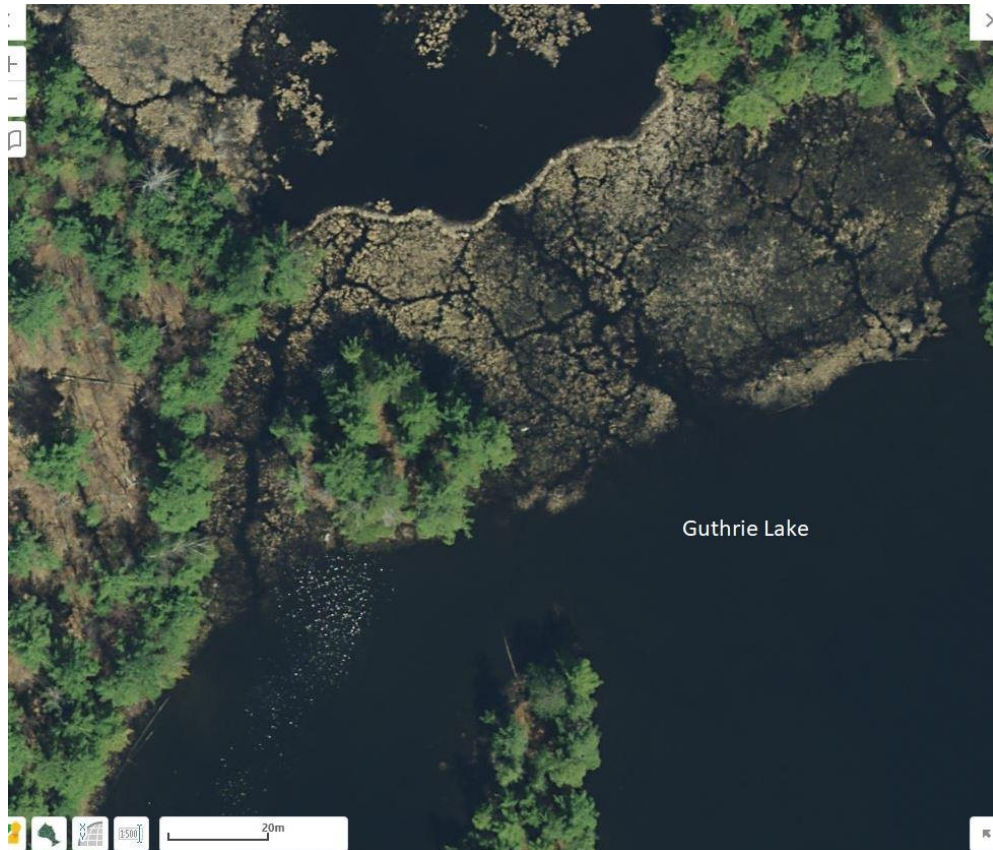


Our route -- There is a trail along the east side of Basin Lake that ends at a marsh above the lake. Beyond this point bushwhacking is required to find remnants of an old trail. Note – Some of the trails shown on the following two topographic maps are now grown over.





Marsh at the top of Guthrie Lk. For anyone hiking in and wanting to get to the old ranger cabin, it requires finding a way across or around this large marsh.



The marsh has changed considerably since this aerial photo was taken, but the beaver dam that is clearly visible in the photo is still in place.

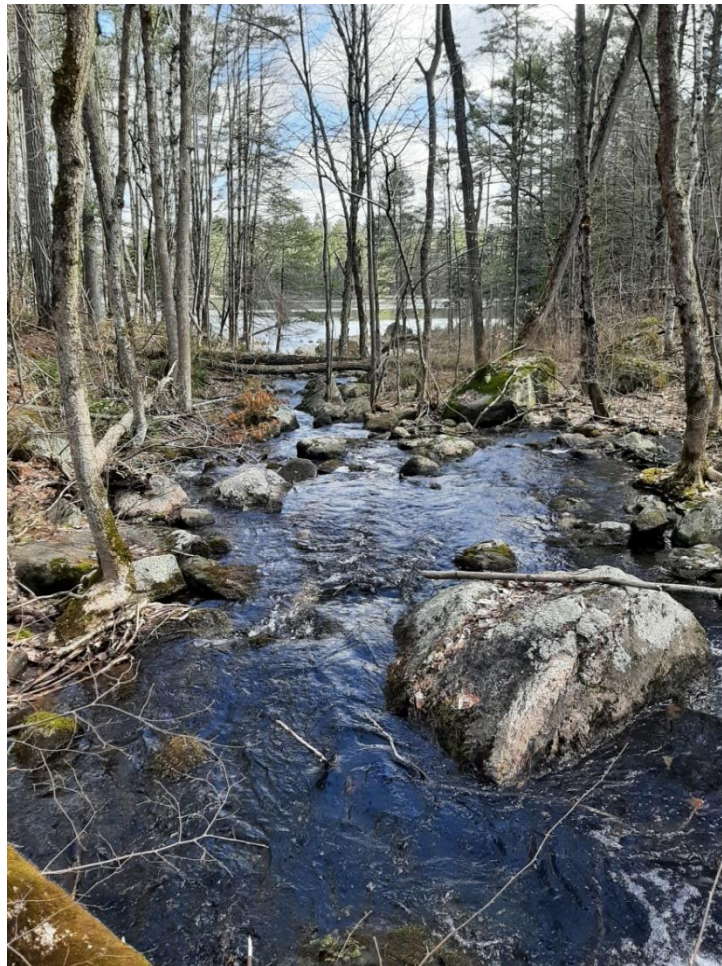
Photo courtesy of FishONLine



We decided not to go the long way around the marsh and, instead, crossed the beaver dam.



We followed the stream that flows out of Guthrie into Turcotte Lk.



Turcotte Lk in the distance





Turcotte Lk – with a cold breeze coming off the lake.  
The portage from Turcotte Lk to Clover Lk is located to the east of this stream.  
See Jeff's map below.



Portage from Turcotte Lk to Guthrie Lk (courtesy of Maps by Jeff)





Following an animal trail toward the old ranger cabin



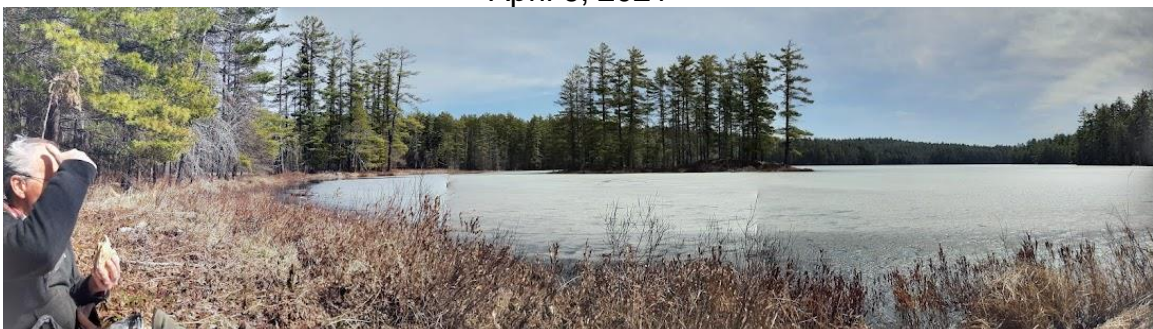
Shell of a large snapping turtle that was found along the stream. This reminded me that in the 1970s I heard people from the upper Ottawa Valley refer to Guthrie Lake as Turtle Lake.



Remains of the ranger cabin on Guthrie Lk. I first visited the cabin in Feb. 1974 at which time it could still provide winter shelter; stayed again for 2 nights in the spring of 1981.



Photos from a hike to Guthrie Lk made the previous year – just before ice off – April 6, 2021





Distance covered – approx. 19.5 km return. Route shown is not exact.